

Non Sacrificial Panel (NSP) Sampling

SAMPLING KIT MATERIAL

NSP does not require any specialized instruments, centrifuges, pipettes or vials. Inotiv supplies the following materials:

Sampling material included in this kit:

- **BAG 1:** fur swabs, 2ml tubes and 5ml tube to collect swabs after sampling and a biohazard bag.
- **BAG 2:** wet swabs with transport medium (Portagerm, oral swabs for microbiology tests - culture) and a biohazard bag.
- **BAG 3:** flocked swabs, 2ml tubes and 5ml tube to collect swabs after sampling (oral swabs for rtPCR test) and a biohazard bag.
- **BAG 4:** DBS cards (non-irradiated) with desiccant and a biohazard bag.
- **BAG 5:** 2ml tubes and 5ml tube to collect fecal samples and a biohazard bag.

Note:

- All material provided are sterile except DBS cards that can be sterilized by autoclave or fume chamber.
- Please use 5ml tube for pooled samples and 2ml tubes for single samples.

Sampling material not included

- Sterile needles
- Sterile forceps
- Scissors





1

FUR SWAB SAMPLING (USE BAG 1).

- **A** Place animal on wire bar lid and gently restrain.
- **B** Rub the swab against the direction of its coat. → **Figure 1,2**
- **C** Swab the inguinal region, back, head, over the ears and the neck. → **Figure 1,2,3**
- **D** Place swab tip into a labeled fur sterile tube with sample ID according to packing and shipping instruction documents.
- **E** Place the tube in **BAG 1** following the packing instruction.

Pooling options:

- Up to 5 samples can be combined into one, single pooled sample using a 5ml tube.



Figure 1



Figure 2



Figure 3

2

WET (USE BAG 2) OR FLOCKED (USE BAG 3) ORAL SWAB SAMPLING.

- **A** Use flocked oral swab (BAG 3) for rtPCR testing or the wet oral swab (BAG 2) (Portagerm) for culture detection.*
- **B** Label the swab tube with sample ID according to packing and shipping instruction documents.
- **C** Scuff the animal with one hand to prevent the head from moving side to side. → **Figure 4**
- **D** Insert the swab from the corner of the mouth so the animal will open it. → **Figure 4**
- **E** Slowly rotate the swab around the animal's mouth to collect the sample. → **Figure 4**
- **F** Place the swab tip into a provided sterile tube.
- **G** Place the tube into **BAG 3**, following packing instructions.
- **H** In the case of wet swab (only for culture detection) place the entire swab into the Portagerm tube and place the tube in **BAG 2** following the packing instruction.

Pooling options:

- A maximum of 10 samples can be pooled into one, single sample.
- Wet oral swabs cannot be pooled.

* Use the wet oral swab (Portagerm, BAG 2) for culture detection or flocked oral swab (BAG 3) for rtPCR testing.



Figure 4

Please store all the sampling materials at room temperature until shipment

3

DRY BLOOD SPOT SAMPLING (USE BAG 4).

- **A** Label your DBS cards with the sample ID.
- **B** Place animal on a suitable surface. → **Figure 5**
- **C** Using a needle nick/puncture the lateral vein. → **Figure 5**
- **D** Blot 2 blood drops directly onto the circle printed on the card. If the blood flow stops or slows, then gently rub the tail in a downwards motion. → **Figure 6**
- **E** The drop size needs to be at least 0.7 mm in diameter.
*Please ensure that the drops don't exceed the circles as if different samples coalesce the samples cannot be tested. → **Figure 7a,b***
- **F** Leave the card to air dry for a minimum of 1 minute.
- **G** Secure the card using the tab.
- **H** Place the cards in **BAG 4** following packing instructions.

Pooling options:

- We do not recommend pooling DBS and serology samples due to the potential non-specific/idiopathic interactions between samples, causing false negative/positive reporting.

Note:

- Other blood collection techniques may be used.
- The DBS cards can be fumigated or autoclaved.

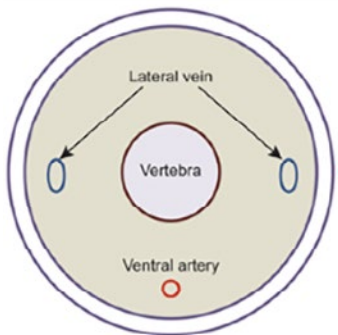


Figure 5



Figure 6



Figure 7a - Correct



Figure 7b - Incorrect

4

FECAL SAMPLES COLLECTION (USE BAG 5).

- **A** Single sample: collect up to 10 fecal pellets for mice and up to 2 fecal pellets for rats.
- **B** Place fecal pellets into labeled tubes.
- **C** Place the vials in **BAG 5** following packing instruction.

Pooling options:

- Pooled samples (up to 10 cages): ideally collect 2 fecal pellets for mice and 1 for rats from each cage using sterile forceps.
- If possible, for pooled samples please collect equally fresh and dried pellets.

Note:

- Ship the same day at room temperature in sealed tubes.

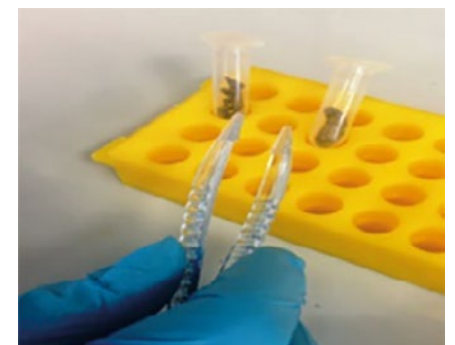


Figure 8



Hopefully these instructions have been helpful to you upon collecting samples. In case of any doubt, please don't hesitate to contact one of our Inotiv Laboratory facilities:

UK: Customer Services

Dodgeford Lane, Belton

Loughborough

Leicestershire, LE12 9TE

United Kingdom

Tel: +44 1530 222123

Email: RMS-UK-Technical-services@inotivco.com

EU Continent: Health Monitoring Lab

Via Nuova Valassina, 78

Uscita Desio centro, a fianco Linea8

20832 Desio (MB)

Italy

Tel: +39 02 6145 1011

Email: healthmonitorlab@inotivco.com

Also read the Packing and Shipping Instructions!

